

WPI-Bio2Q Open Seminar

①Talk:

Advancing Biomedical Image Analysis and Lab Automation through Computer Vision

②Deep Dive Session:

Automation in structural biology imaging

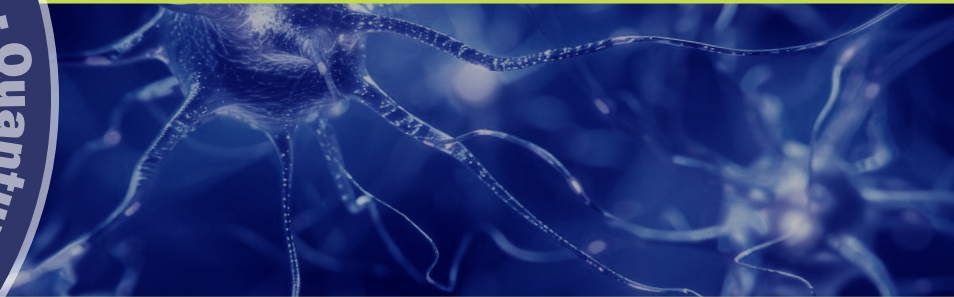
April 24, 2025

14:00 -16:40

JKIC 1F

Shinanomachi Campus, Keio University

Onsite only / No pre-registration required



Min Xu, Ph.D.

Associate Professor, Computational Biology
School of Computer Science, Carnegie Mellon University

WPI Research Center
Keio University



Organizer : Keio University Bio2Q Office
Address : 35 Shinanomachi, Shinjuku-ku,
Tokyo 160-8582, Japan
Contact : bio2q@info.keio.ac.jp
Website : <https://www.bio2q.keio.ac.jp>

Keio University

